

# \$465,000 - 848 Robert Smalls Parkway, Beaufort

MLS #164387

**\$465,000**

Bedroom, Bathroom,  
Land on 1.23 Acres

Frnt Hwy 170, Beaufort, SC

High traffic corner lot with 320 ft of road frontage at the lighted intersection of Highway 170 & Savannah Hwy. Annexed into the Town of Port Royal with T4 Neighborhood Center Open Zoning. Very good elevations and visibility.



## Essential Information

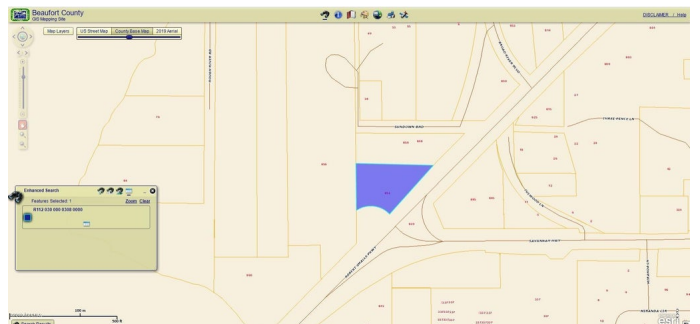
MLS #	164387
Price	\$465,000
Acres	1.23
Type	Land
Sub-Type	Resident S/D Lot
Status	Active

## Community Information

Address	848 Robert Smalls Parkway
Area	Burton
Subdivision	Frnt Hwy 170
City	Beaufort
County	Beaufort
State	SC
Zip Code	29906

## Amenities

Utilities	Available Not on Site
View	Hwy 170
Is Waterfront	Yes
Waterfront	None



## Exterior

Lot Description      Corner

## Additional Information

Zoning                  Residential/Commercial

## Listing Details

Listing Agent          Michael Mark

Listing Office          Charter One Realty

Data last updated: August 10th, 2022 at 9:31pm EDT and updating occurs every 15 minutesThe information being provided by BEAUFORT® is for consumers' personal, non-commercial use and may not be used for any purpose other than to identify prospective properties consumers may be interested in purchasing.